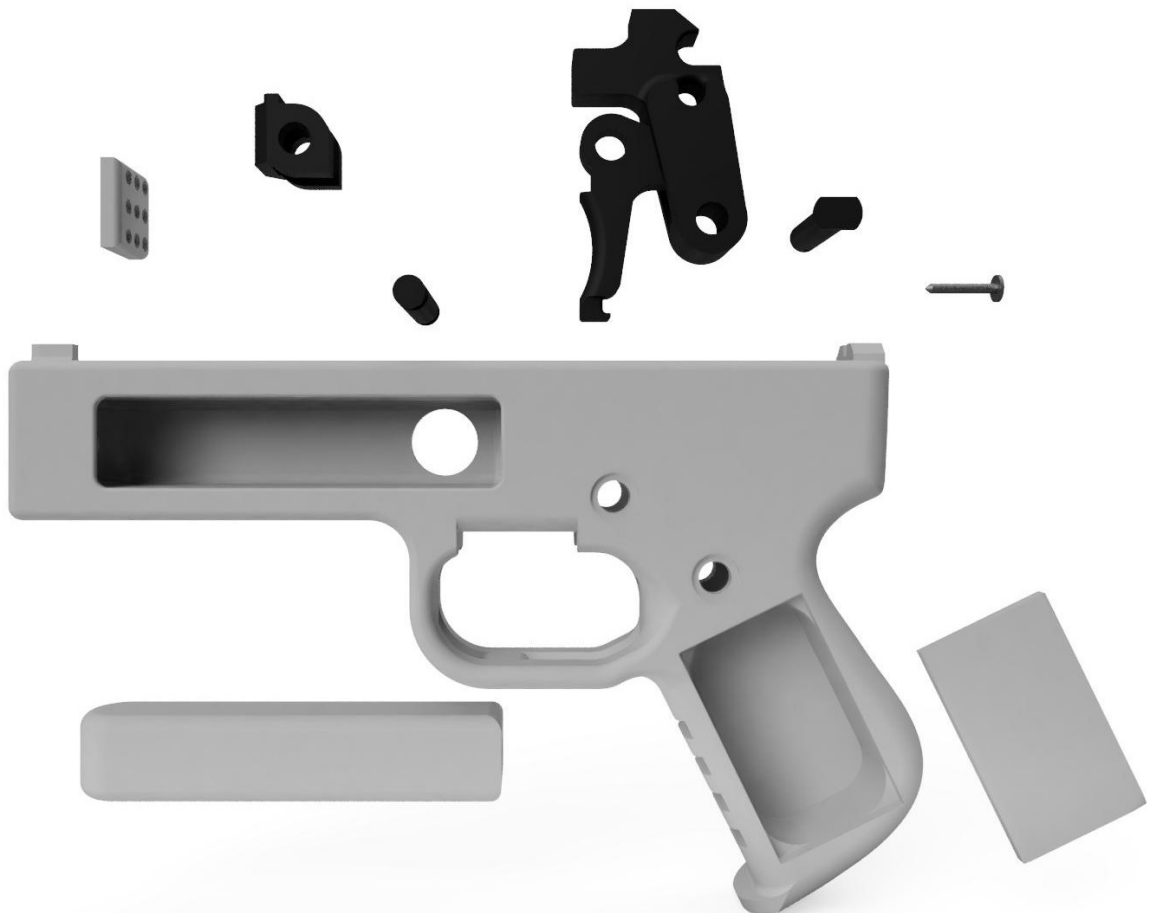


THE SONGBIRD PM4 CENTER-FIRE

[VERSION 1.1]

GENERAL ASSEMBLY



SONGBIRD PM4 CENTER-FIRE REQUIRED PARTS

- One Songbird PM4C reg frame or recoil pad frame.

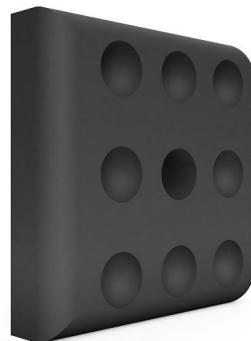


-If you choose the recoil pad frame, a recoil pad is required.

FRONT



BACK



- One Trigger



- One Trigger pin



- One Hammer



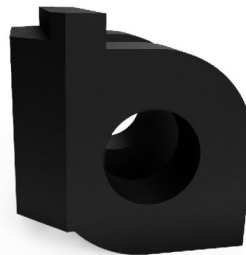
- One Hammer pin



- One Frame cap



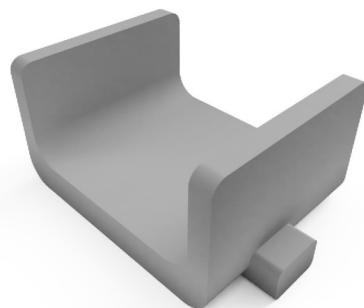
- One Firing pin retainer (flexible filament recommended)



- One Songbird PM4C Barrel. See the Barrel and firing pin construction chapter in the PM4C manual for build instructions.



- One Barrel 2 retainer (ONLY if barrel 2 is used)



- One Firing pin. See the Barrel and Firing pin construction chapter in the PM4C manual for build instructions.



- Two rubber bands (three rubber bands if the barrel 2 retainer is used)



SONGBIRD PM4 CENTER-FIRE ASSEMBLY

The Songbird PM4 Center-fire is one of the easiest firearms to assemble, made of only 11 to 15 parts (depending on the frame type, barrel used, etc.).

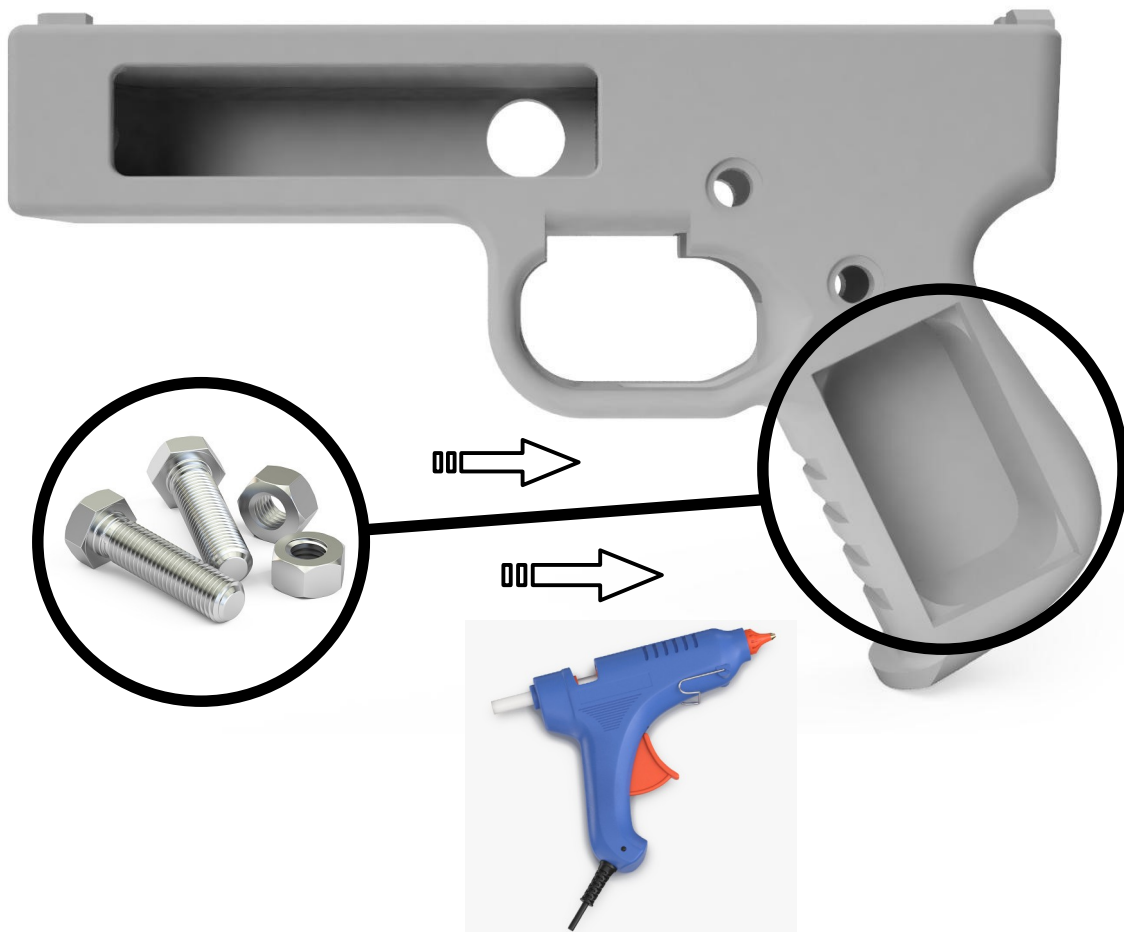
STEP 1

Make sure all surfaces, holes, curves, and cracks are smooth, and without burrs or other unwanted material. Remove any unwanted material with sand paper, metal files, a rotary tool/Dremel tool, etc.



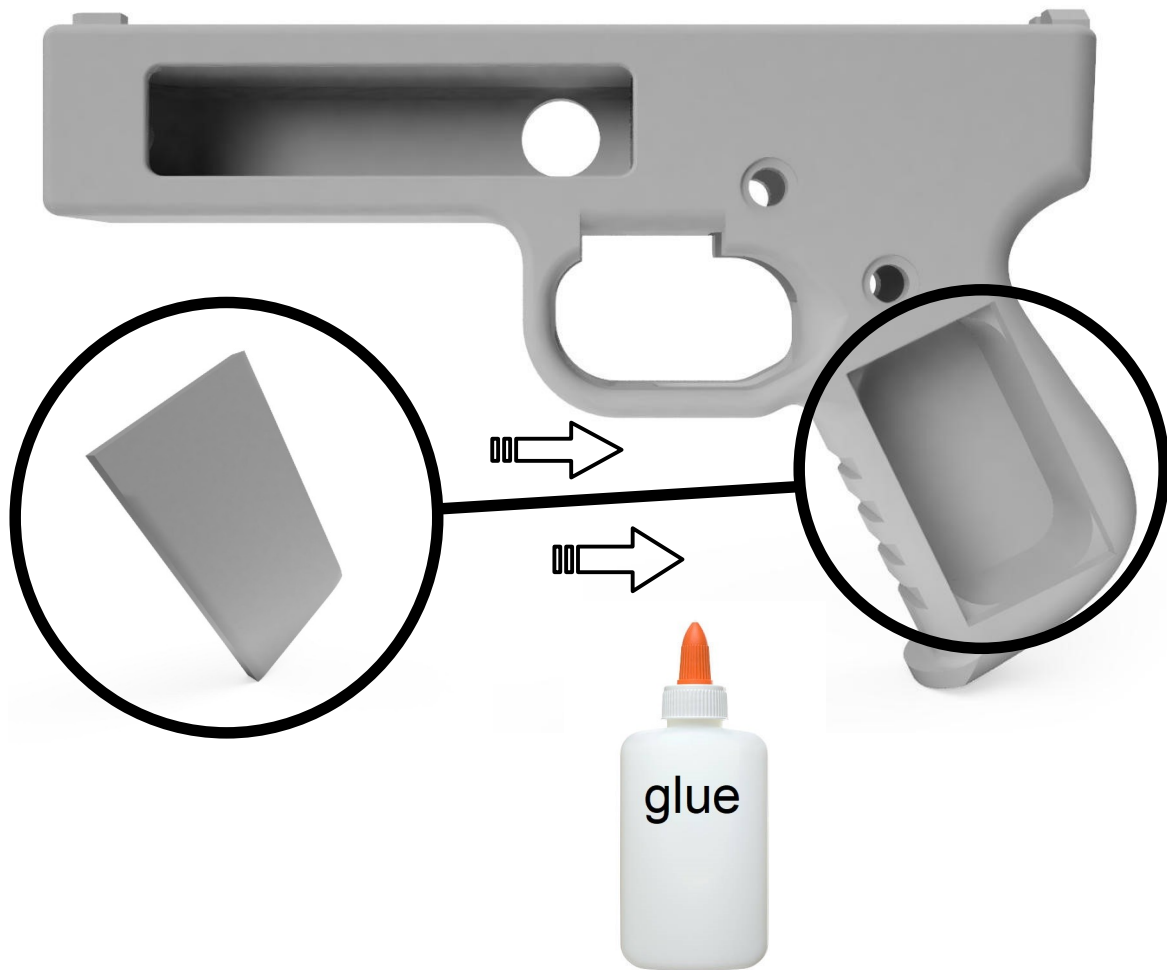
STEP 2 (OPTIONAL)

In some countries, states, provinces, and/or counties across the world, the Songbird PM4C is only legal if the builder/operator secures a certain amount of metal into the frame of the firearm. This is the purpose of the compartment in the PM4C's frame. If the PM4C builder/operator chooses to comply, they can glue the required amount of steel into the frame compartment, located in the grip of the firearm.



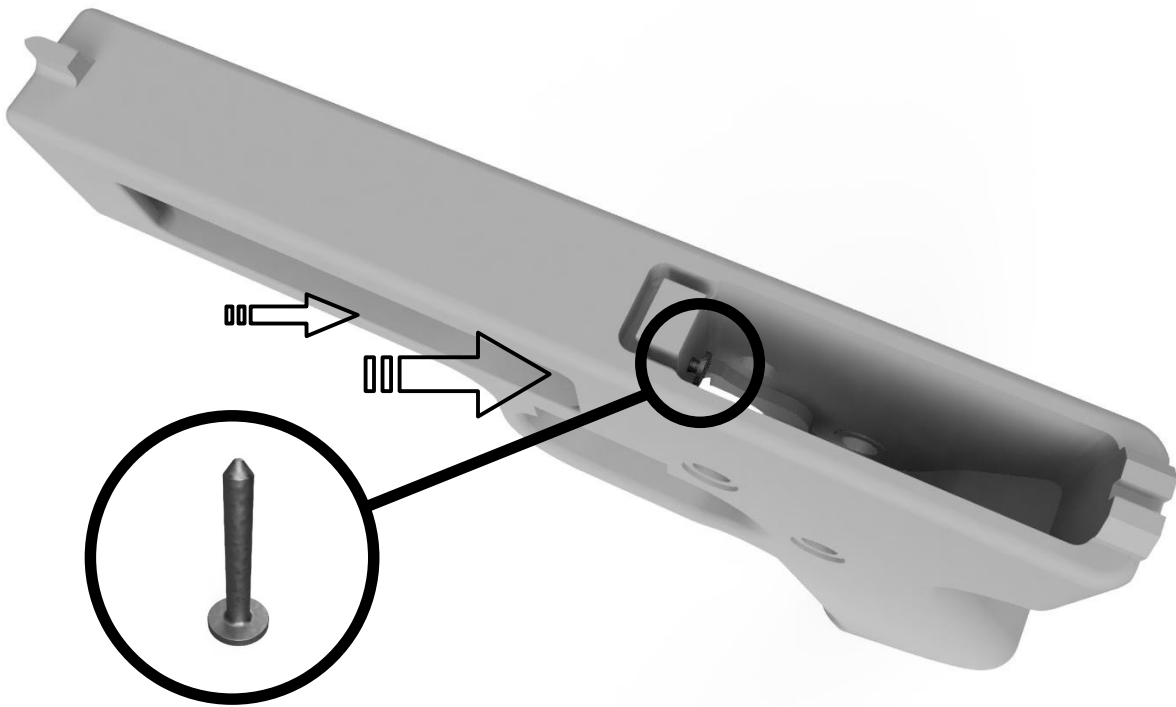
STEP 3

Glue the frame cap over the frame compartment.



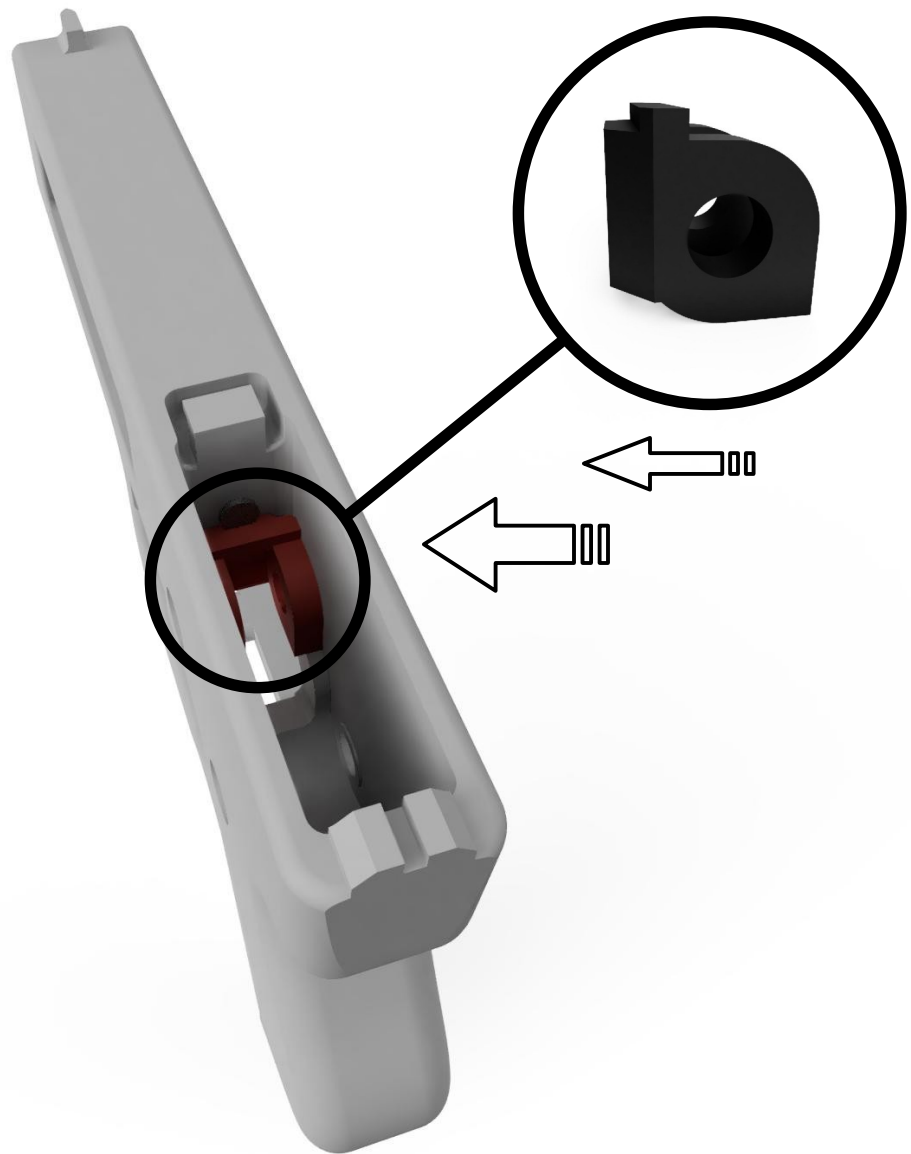
STEP 4

Insert the firing pin from the back of the frame. The firing pin should be able to freely move forward and aft.



STEP 5

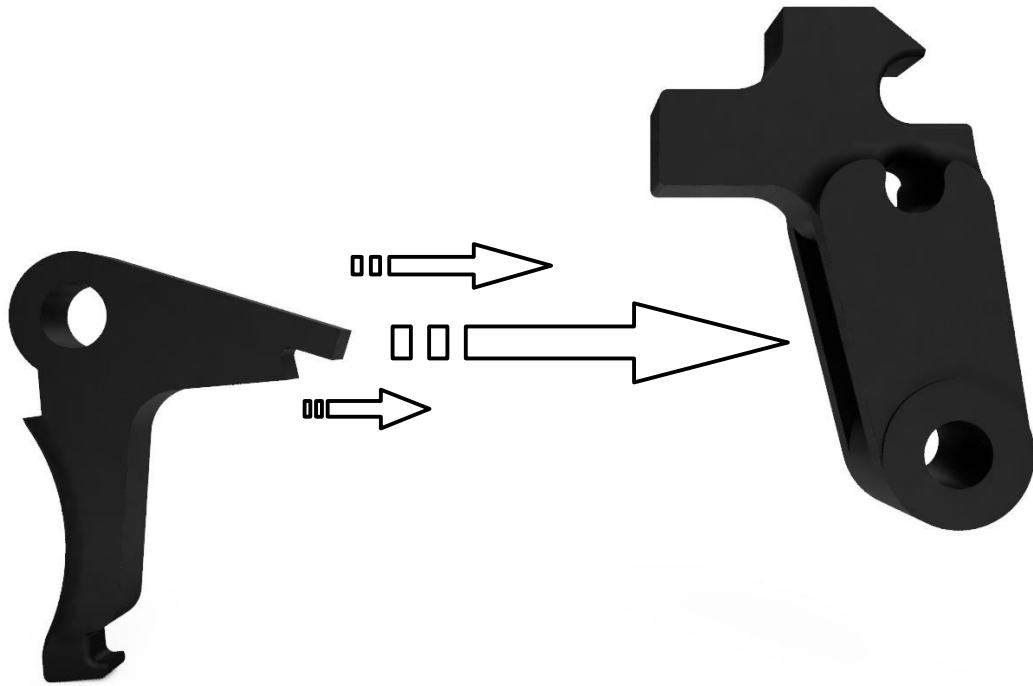
Insert the firing pin retainer into the frame behind the firing pin with the flat side facing forward. The flat side should be touching the wall of the frame with the tab on top behind the firing pin, and the holes on the firing pin retainer lined up with the trigger pin hole in the frame.



(firing pin retainer is highlighted in red for better visibility)

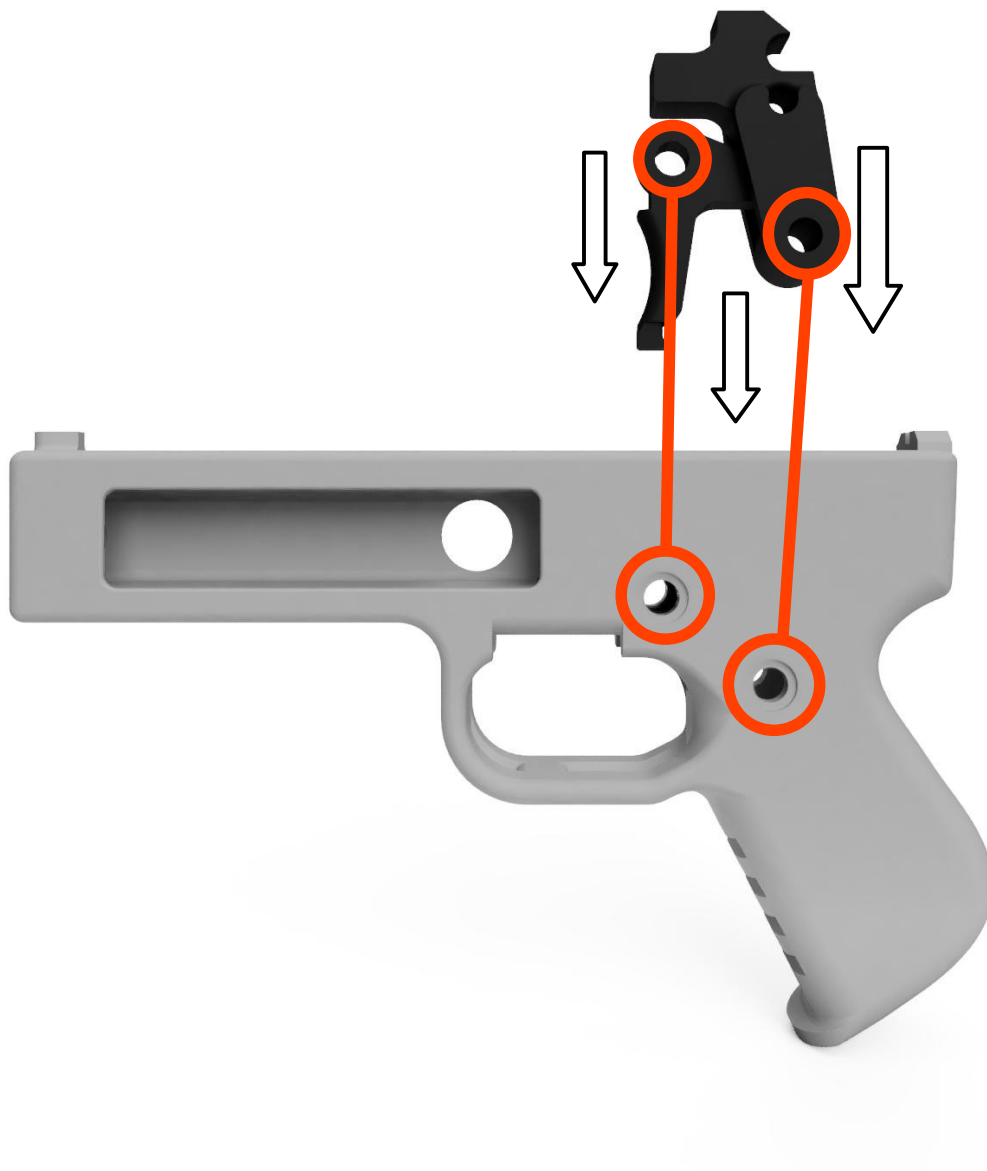
STEP 6

Insert the back of the trigger into the hammer from the front.



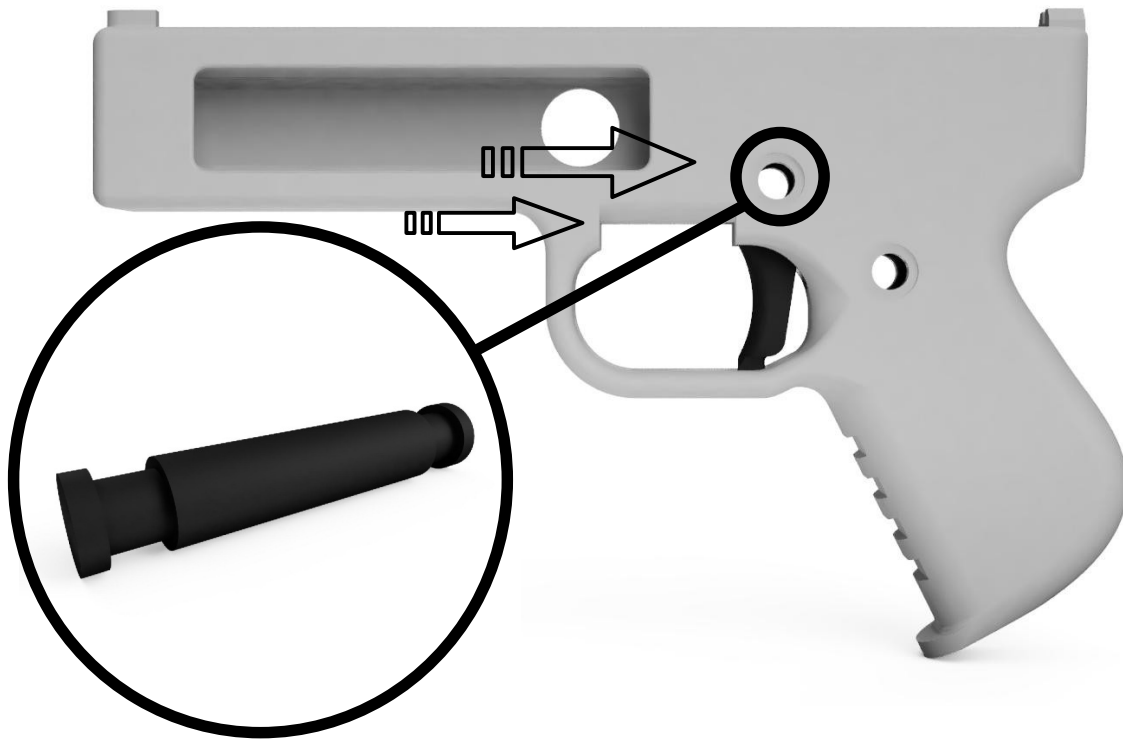
STEP 7

Insert both the trigger and hammer into the frame at the same time.



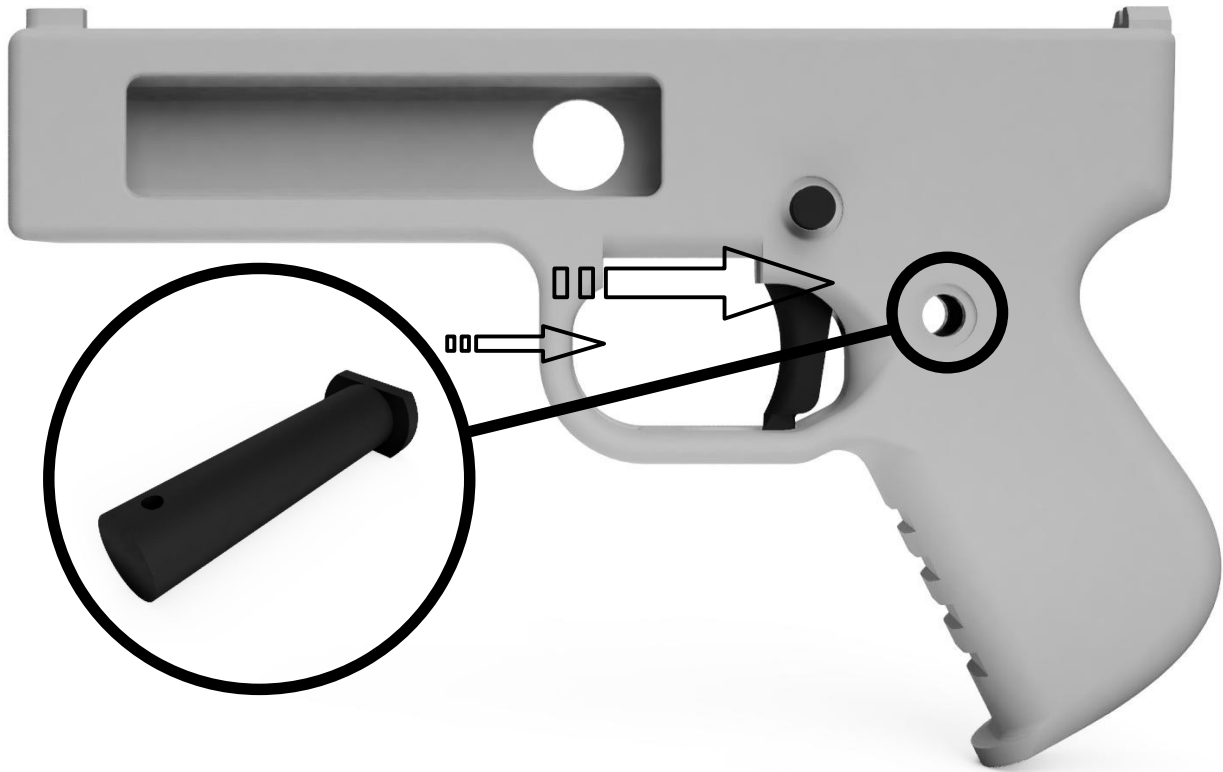
STEP 8

Slide the trigger pin into the trigger pin hole in the frame, trigger, and firing pin retainer.



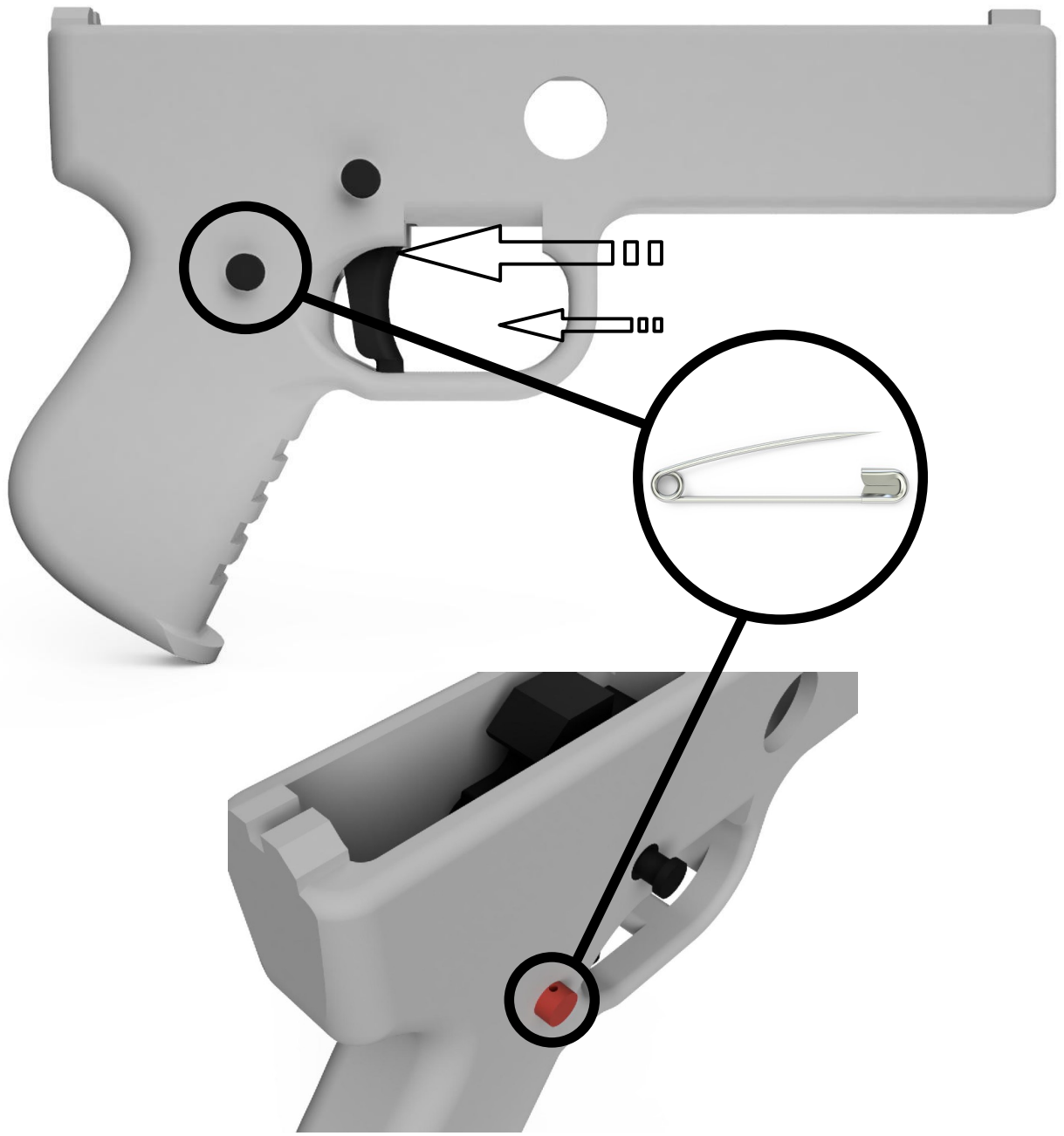
STEP 9

Slide the hammer pin into the hammer pin hole in the frame, and the hammer itself.



STEP 10 (OPTIONAL)

If you would like to secure the hammer pin further, you can use a safety pin, paper clip, bent straight pin, etc., to slide through the hole that is on one side of the hammer pin, and lock it in place.



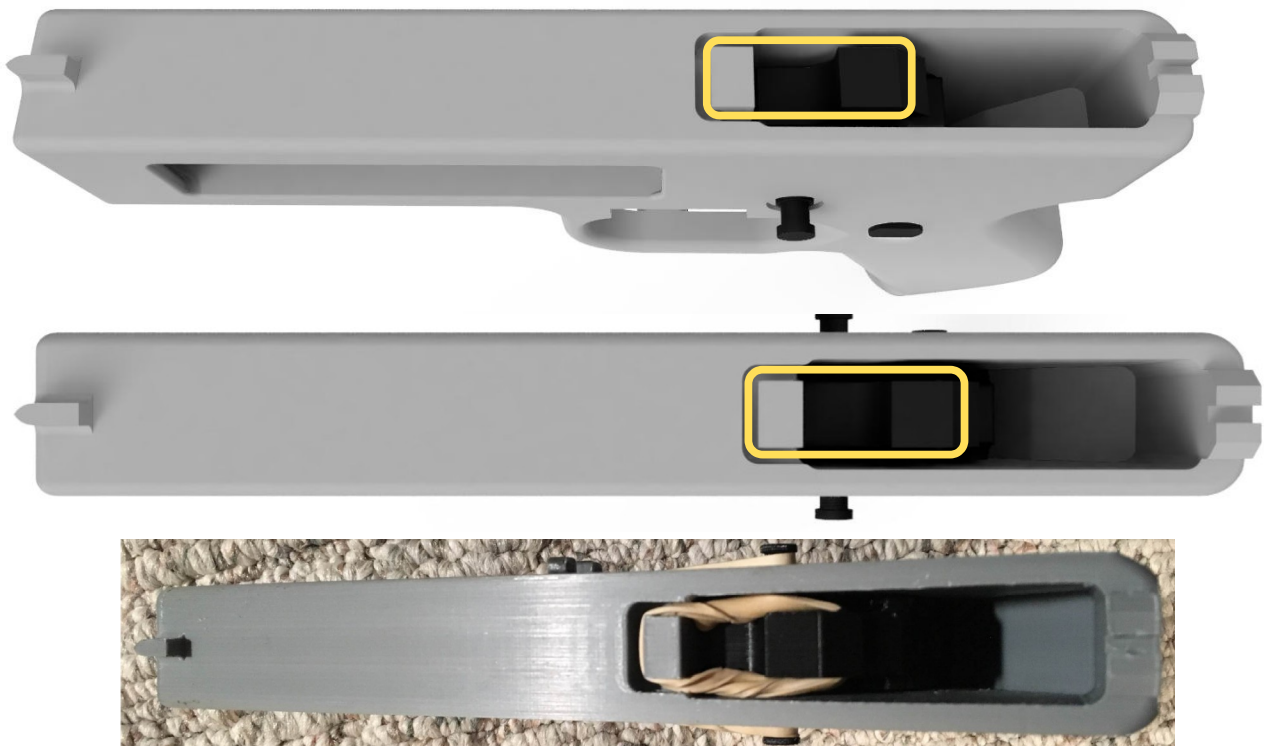
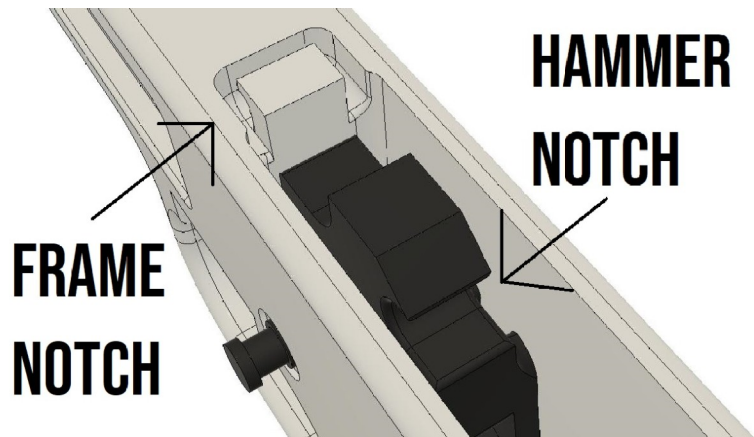
STEP 11

If you are assembling the recoil pad frame, you can now install the recoil pad. To do this, all we have to do is glue it into place at the back of the barrel chamber (almost any glue works for this application). First we can apply a small amount of glue to the back of the recoil pad (the side with nine holes) and/or the inside of the frame where the recoil pad is to be installed. It is extremely important that glue does not touch the firing pin or the firing pin hole during the recoil pad installation, use extreme caution. Now, we can insert the recoil pad into its position with the front (flat side) facing the front of the firearm and the curved edges facing the firearms right side. Push firmly on the front of the recoil pad to make sure it is seated all the way into its position. After the glue has dried, the recoil pad should not extend out of its housing. The recoil pad should be flush with the corner of the barrel housing.



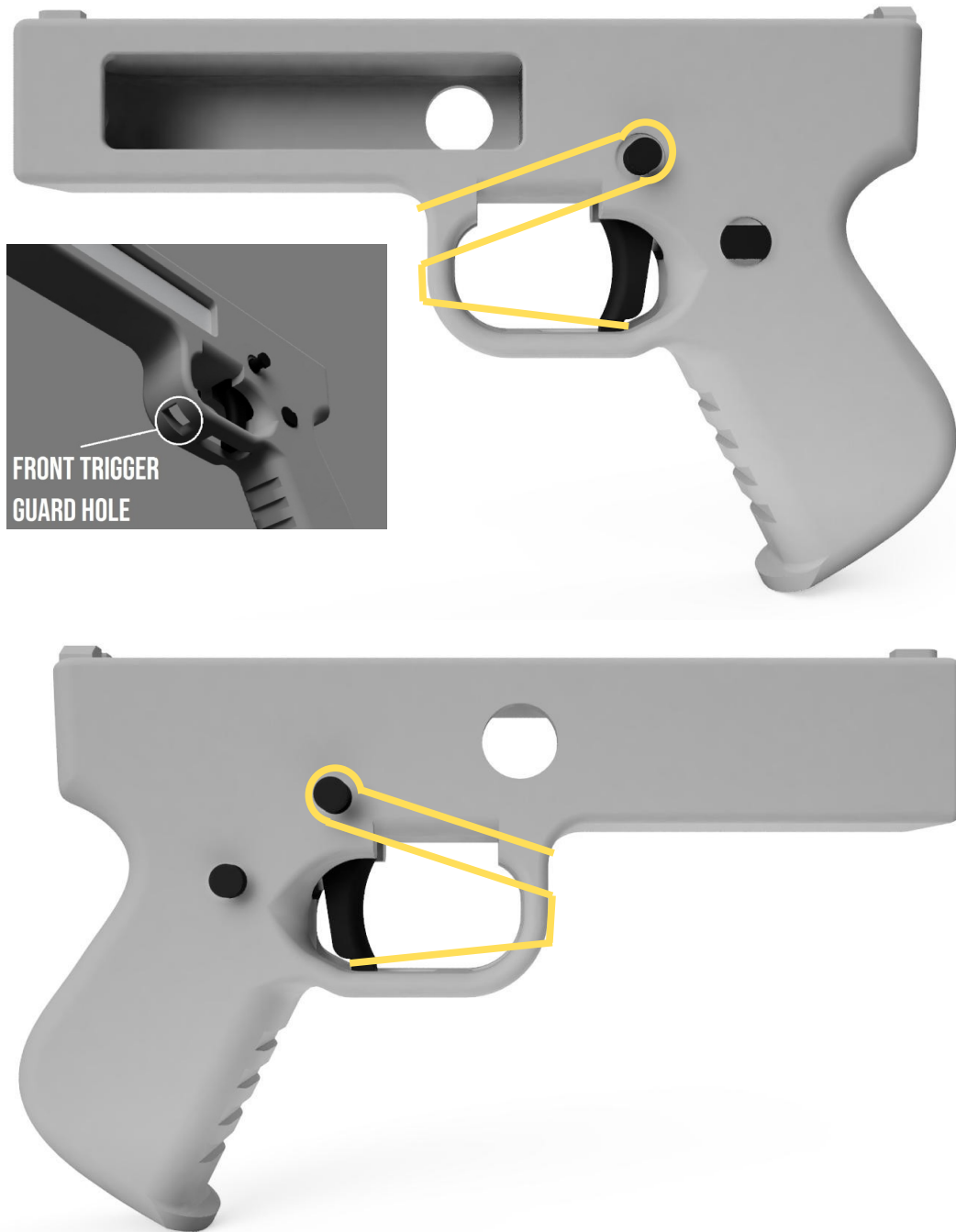
STEP 12

Install the hammer rubber band by looping it around the notch in the hammer and the notch in the frame. The hammer rubber band has to be pretty tight, so you may need to fold the rubber band and then loop it back into place.



STEP 13

To install the trigger rubber band, push one side of the band through the front hole in the trigger guard and loop it around the notch in the bottom of the trigger. Then, stretch the other side of the rubber band and loop it around both sides of the trigger pin.





If you have a small rubber band for the trigger band, you can push one side through the front hole in the trigger guard and loop it around the trigger notch like before, but then take the other side and attach it to the trigger notch as well but without tucking it through the front trigger guard hole.



The Songbird PM4 Center-fire is now assembled and ready for testing at the range. Refer to the Songbird PM4 Center-fire manual for details.